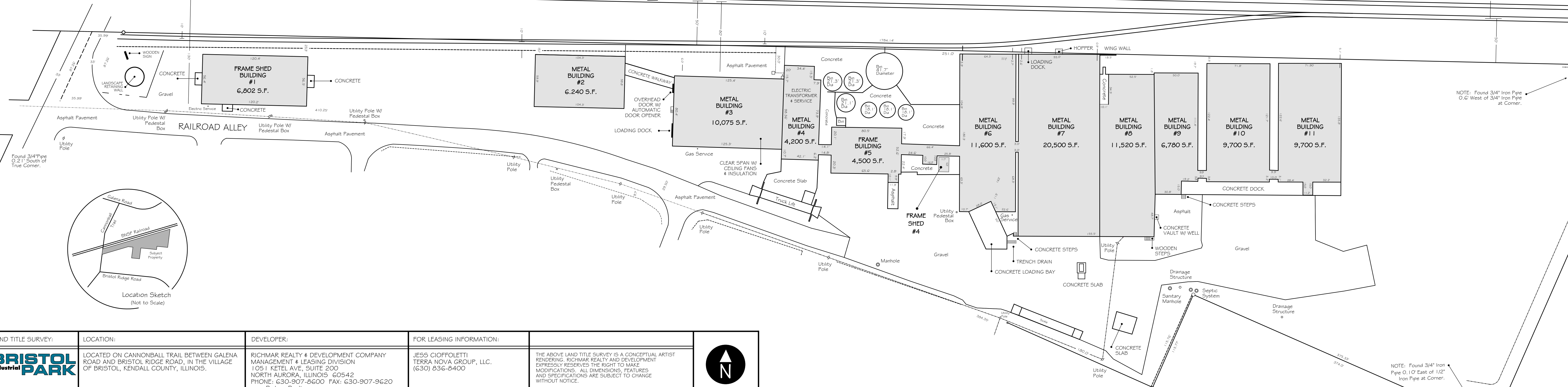


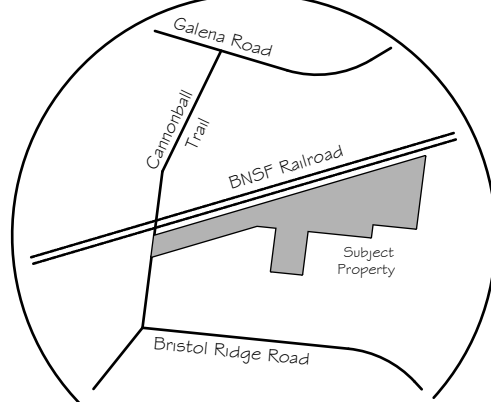
BURLINGTON NORTHERN SANTA FE RAILROAD

BURLINGTON NORTHERN SANTA FE RAILROAD



NOTE: Found 3/4" Iron Pipe 0.6' West of 3/4" Iron Pipe at Corner.

NOTE: Found 3/4" Iron Pipe 0.10' East of 1/2" Iron Pipe at Corner.



Location Sketch (Not to Scale)

<p>LAND TITLE SURVEY:</p> <p>BRISTOL Industrial PARK</p>	<p>LOCATION:</p> <p>LOCATED ON CANNONBALL TRAIL BETWEEN GALENA ROAD AND BRISTOL RIDGE ROAD, IN THE VILLAGE OF BRISTOL, KENDALL COUNTY, ILLINOIS.</p>	<p>DEVELOPER:</p> <p>RICHMAR REALTY & DEVELOPMENT COMPANY MANAGEMENT & LEASING DIVISION 1051 KETEL AVE, SUITE 200 NORTH AURORA, ILLINOIS 60542 PHONE: 630-907-8600 FAX: 630-907-9620 www.RichmarRealty.com</p>	<p>FOR LEASING INFORMATION:</p> <p>JESS CIOFFOLETTI TERRA NOVA GROUP, LLC. (630) 836-8400</p>	<p>THE ABOVE LAND TITLE SURVEY IS A CONCEPTUAL ARTIST RENDERING. RICHMAR REALTY AND DEVELOPMENT EXPRESSLY RESERVES THE RIGHT TO MAKE MODIFICATIONS. ALL DIMENSIONS, FEATURES AND SPECIFICATIONS ARE SUBJECT TO CHANGE WITHOUT NOTICE.</p>
---	--	--	---	---

